



**Imagine
the
Possibilities**



2015 Annual Impact Report

From the President



We have come a long way from the tornado of November, 2013 hitting Bona Vista and destroying one building and damaging two others and now getting ready to open our new Imagine That facility. True to the nature of

the Bona Vista family, we have made something positive out of a terrible event. The Imagine That facility will be the new home of Community Connections, our day program for adults with significant physical and cognitive limitations. Lots of accessible space, natural light and space will be a wonderful addition for our adults involved in this important day program.

Bona Vista is also busy adding homes to our progress list. We are building three homes and a community center at our Laguna Commons location. Eleven adults with developmental disabilities will find a new home mid-summer. The community center will be used by adults in our services for extracurricular activities and our early childhood services will also have additional space for parent trainings. This past year, Bona Vista was also approved by the Federal Home Loan Bank to purchase three existing homes and remodel them for our adults seeking viable housing. All of the maintenance of the homes is completed by our outstanding staff.

As an organization, we continue to seek staff who will be invested in our mission and enjoy working with our children and adults. We have many talented staff who are determined to make a difference in people's lives in a positive way and come to the agency with creative ideas. Bona Vista does have positions open in the area of Direct Care. We recently increased

our pay rates hoping to attract more motivated people, but caring for another person can be challenging, and not everyone is up to the task. On a daily basis Bona Vista serves over 2000 children and adults, the organization runs 24/7.

It is the goal of Bona Vista to meet the needs of every child and adult, but reimbursement is both changing and challenging and families have a difficult finding people who can help them navigate the process. Bona Vista does have staff who are able to assist families in finding the necessary people and providers to secure care and programming for their family member.

We encourage you to visit our website www.bonavista.org, call the agency or check our Facebook page. We are always willing to assist and provide choices for your loved one.



Sincerely,

Jill S. Dunn
President

Board of Directors

Chairperson

Ken Lucas

Vice Chairperson

Pedro Castillo

Treasurer

Stephen Nudge

Secretary

Jan Dieterly

Mike Anderson

Tammy Cody

Debbie Cook

David Dukes

Chad Howerton

Mark Jansen

Joey Kimbrough

Mark Koors

Karen McKinney

Diana Mishler

Kevin O'Keefe

Sherry Otto

Kathy Rethlake

Rhoda Reyburn

Shelly Wyman



"My favorite thing is the help I get and the close relationship all the staff have with the kids and us as parents. It's always clean and organized atmosphere."

— Parent of Jaydah (4 yrs) and Jaylah (5 yrs)



CHILD SERVICES



Child Care Solutions

Number of training opportunities offered in 2015: **264**

Number of parents, providers and community members in attendance: **789**

Number of children impacted through training and support: **4,480**

This year, the Child Care Solutions grant added a school age specialist to their program. This individual will assist public schools who are interested in opening an early childhood program within the school building.

Keys for Kids



Keys for Kids Preschool provides services and support to children and their families through an individualized program that will maximize potential, encourage independence, promote inclusion, and improve the quality of life for those children and their families. In 2015,

Keys for Kids Preschool served **295** students from 2 through 5 years of age in Howard and Miami Counties. Program updates include:

- Six staff completed *Making the Most of Classroom Interaction* training series, through Child Care Solutions, to improve teacher to child interactions.
- Our Special Education added Southeastern School Corporation, which increases our contracts from 8 to 9 over the 2015 year.
- Recipient of the Early Learning Indiana grant, with a focus on building capacity which will allow for construction and opening of a new preschool classroom.

"School is fun! You have nap time, you get to paint and play!" — Jaylah (5 yrs)

Early Head Start



Early Head Start serves **114** pregnant women and children who are at considered at risk. This includes homeless families, families below the poverty level, children in foster care and those receiving public assistance such as Supplemental Social Security. Services include family education around parenting practices and gaining stability, day services such as child care and health services to insure that children receive all recommended preventative care. The program also includes prenatal support, mental health assessments, education, and coaching. Recent program updates include:

- **73%** of children are up to date on recommended preventative care such as immunizations, physicals, and dental examinations helping them to be healthy and ready to learn.
- Awarded the Delta Dental grant to support the expansion of parent education around the importance of taking infants and toddlers to the dentist.
- The program's waitlist has tripled since last year and currently stands at **93 children**.



Positive Results for Kids



Our therapy program continues to provide pediatric services in the areas of developmental, occupational, physical and speech language therapies in Howard and Miami counties. Thanks to help from United Way of Howard County, we also provide free developmental screenings to children from birth to 5 years of age. In 2015, we served **101** children through our school contracted services, **173** children through the Indiana First Steps program and **78** children through our Outpatient Clinic.

Early Childhood Grants in 2015



- *Champions for Healthy Kids—General Mills*
- *Making the Most of Classroom Interactions—IACCRR*
- *PNC Charitable Foundation—Keys for Kids Accessibility Initiatives*
- *Community Foundation—Multi-sensory room*
- *Delta Dental—Building Healthy Smiles*
- *Early Learning Indiana—Preschool Expansion*

Busy Box



The BV Busy Box is an idea created by the staff at Bona Vista Programs. This product is for children and their families that want to provide the tools to support their child's developmental path while fostering creativity and learning. Each subscription box will include hands-on activities, such as crafts, recipes, sing-a-long songs and an instructional manual with a developmental handout that outlines the focus of each activity.

Cognitive *Critical thinking skills for gaining knowledge.* • Measuring for recipes requires thinking and mathematical awareness. • Asking additional questions after completing an experiment or activity.



Physical *Body movement and coordination.* • Involvement with activities within the busy box will enhance fine and gross motor movement. • Art, experiments, activities and songs will all keep your child moving.



Social Emotional *Connection to others and self.* • Sharing the box with siblings and friends will enhance awareness of others. • Discovery of activities and completion of tasks will develop sense of accomplishment and pride.



Language *Ability to communicate.* • Working with an adult and communicating the steps to complete an activity will build communication skills. • Sing-a-longs will provide a fun way to build language skills. • List of recommended books will enhance early literacy and comprehension.



"We have experienced firsthand the impact that Bona Vista has on the individuals it helps, the families it supports and the community it serves. Because of the education, resources and services provided by Bona Vista, our daughter is developing her abilities in ways we weren't sure possible. We learned early on that Bona Vista isn't just advocating for special needs, they are advocating for quality of life for ALL ages and abilities. Bona Vista is an amazing asset right here in Kokomo!"—Laura Stiner, parent of Lila (5 yrs)





"Bona Vista has changed our lives in multiple ways....The preschool staff is amazing and I always know my kids are safe and well taken care of. Also the therapists treat my kids like they are their own. I love the fact if there is ever a problem or the staff has a question about my children they do not hesitate to call me. The communication is amazing they go above and beyond." — Parent of Thomas (4 yrs) and Hope (1 yr)



ADULT SERVICES



Bona Vista Industries

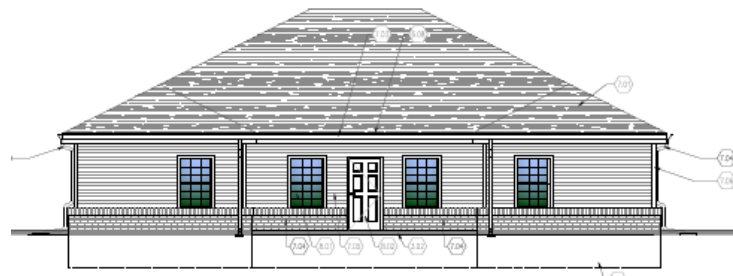
BVI provides vocational and life experiences to adults with disabilities in an integrated industrial setting. BVI is able to provide these experiences through sub-contract services with area, regional and federal business and organization as well as with group habilitation. In 2015, BVI served

156 adults with disabilities in our Kokomo program and 55 adults in Peru's location.

Supported Living

The Supported Living program provides residential support in the home of the person served. Services are provided for as little as one hour a week up to 24 hours a day. Goals for individuals in the program range from daily living skills, residential management, budgeting and shopping, community integrations, financial management and management of medical needs. In 2015, the program was awarded a housing grant to begin the Laguna Commons project. The housing unit will provide housing for 11 additional individuals. Program updates include:

- Currently the program has 44 residential sites (39 in Howard County, 4 in Peru and 1 in Tipton)
- Number of Persons Served: 71
- Age Range: 20-75 years old
- Gender: Male 44; Female 27



RSPO

Respite Care



Respite Care service is a non-goal based service. RSPO care is typically provided in the home of the primary caregiver, however it can be provided in the community. RSPO service offers relief or a period of rest to the regular caregiver. In 2015, 33 new intakes were completed and 141 individuals received services.



CHIO

Community Based Habilitation Individual



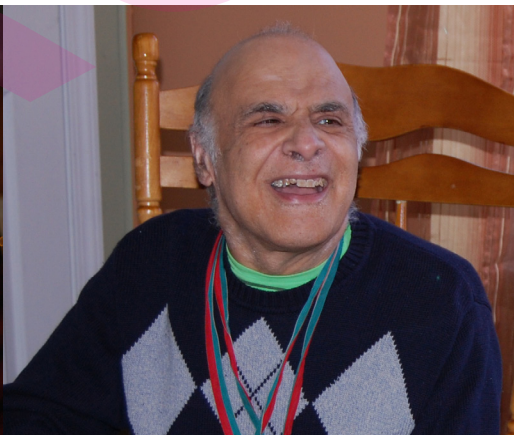
Community Based Habilitation Individual is a goal based program that includes services outside of the individual's home, that supports learning and assistance in the areas of: self-care, sensory/motor development, socialization, daily living skills, communication, community living and social skills. Community based activities are intended to build relationships and natural supports.

PAC

Participant Assistance and Care



Participant Assistance and Care services are provided to assist consumers to live successfully in their homes. PAC service is a non-goal based program that can be provided outside or inside the home of the person served. PAC services support learning and assistance in the areas of: daily living skills, self-care, scheduling appointments, paying bills, chores, cooking meals and leisure activities.



"I'm proud to work here," said Cody who receives Prevocational and CHIO services.

Residential

Our Group Homes continue to serve 64 individuals throughout Howard and Miami counties. The individuals living in the eight group homes require 24-hour care to increase their skills in areas such as decision making, socialization, personal care, various aspects of maintaining and operating a household, managing finances and safety needs. Many of the adults also participate in one of our day programs or work services. Program updates include:

- 6 homes in Kokomo and 2 in Peru
- Gender: Male: 42; Female: 22
- Ages range from 18 – 65 years and older

Behavior Management

Behavior support services improve each individual's quality of life. Our team of behavior therapists work alongside the individual's team, consisting of staff, family and case management, to identify behavioral issues that hinder the individual from reaching their maximum potential. Once behaviors are identified, the therapist then puts together a plan and strategy in place to monitor and appropriately address the behavioral concerns. Individual's services are funded through the Bureau of Developmental Disability Services (BDDS) and are funded through the Family Supports Waiver (FSW) and Community Integration and Habilitation (CIH). In 2015, the behavior therapists provided support and services to 26 individuals.

WorkForce Diversity

WFD provides employment support services to individuals in 17 counties. A team of job coaches assist individuals of all abilities in finding and maintaining employment. Our staff also work with high school students in preparation for employment after leaving school.

- WFD served 244 individuals in 2015
- The program continues to participate in the Indiana School-to-Work Collaborative in Grant and Cass counties. This program prepares high school students with disabilities for work by providing employment coaching, family training, benefits planning and internships.
- Thanks to grant funding from the **Howard County Commissioners** and the **Tipton County Foundation**, 26 persons served by WFD completed paid internships in Howard and Tipton Counties in 2015.
- Individuals served by WFD have been using the **Good View Thrift Store** in Peru as a training center. Individuals work on customer service skills, cash register skills, stocking and cleaning as part of this training program. Two individuals served by WFD have been hired by the Good View Thrift Store.



We build the *foundation* of success for children and adults, regardless of abilities, through *encouragement, independence and inclusion* in reaching their *maximum potential*.



*encouragement, independence
maximum potential.*



The Good View Thrift Store

The thrift store serves two purposes for Bona Vista Programs. First, the store provides a training facility for vocational clients to gain job skills, and secondly it serves as a revenue source for the agency. The clients are offered a work experience opportunity and learn a variety of work and soft skills. The ultimate goal of this business model is to provide individuals the opportunity to gain vocational skills while focusing on building confidence and self-esteem in a safe work environment. The program began with a selection of individuals who have a vocational goal established that compliments the training center environment. The training center serves as a resource for individuals to meet other community members, work in a safe environment and experience their maximum potential through work experiences in a “real life” vocational setting.

Outcomes: Two WorkForce Diversity clients and one habilitation client work in the store, and four more habilitation clients will start in February 2016.



BONA VISTA'S DAY PROGRAMS

• • • • •

Our **Habilitation** department currently serves **156** individuals in Kokomo and Peru through either group or individual sessions. Each person served will determine goals they would like to work on with their team. These goals for individual sessions can range from simple math and reading skills to more complex goals such as reviewing a driver's manual.

Prevocational Classes provide the opportunity for individuals to participate in Volunteer and Entrepreneur activities. The Volunteer program promotes inclusion by fostering positive relationships between our community and person served; while the Entrepreneur program uses the interests and gifts of our individuals to create unique items and encourage them to pursue entrepreneurial opportunities within the community. Prevocational services include teaching concepts such as compliance,

attendance, task completion, problem solving, and safety. There are **35** individuals currently enrolled in these classes.

Sky's the Limit is an innovative program alternative that offers classes for our adult individuals to experience a meaningful day. We offer a variety of educational classes including music and movement, art, nutrition, cooking, exercise, and much more. Throughout the day, persons served attend three separate class sessions and enjoy socialization time with friends while working toward their goals.

Sky's the Limit serves **40** individuals daily. The program currently occupies space in two permanent classrooms and one temporary classroom. In early spring 2016, we will gain one more permanent classroom and an additional room that will be used as an art studio.

Individuals in **Community Connections** generally need intense supervision and are not currently at the level needed to work independently in the community. This program is offered in Kokomo and Peru. Activities are focused on personal goals and improving daily living skills. These include cooking, exercise, music appreciation, academics, pre-vocational skills, crafts, and much more.

Community Connections currently serves **40** individuals in Kokomo and **10** in Peru. The 40 individuals currently being served in Kokomo will soon be moving to a new location at 1800 S. Plate Street in the new Imagine That building. This new facility is the result of the tornado damage in November 2013. The new building was designed specifically for the Community Connections program with many specific details to enhance this program and ensure the best possible setting for our persons served to help them reach their maximum potential.

When Larry was asked about how he feels about his services (Community Connections and Supported Living), his response was, "Happy!"

Just imagine the
possibilities.



OPENING SPRING 2016!

.....

The new facility will house the Community Connections Adult Day Program and offer a space for family engagement opportunities and community enrichment activities.



*Thanks to all the **BV Pals** who have donated to help make this project possible!*

BV Pal Supporters



Mike Anderson
Christy Barker
Shaun Barker
Sharon Barrett
Nate Beining
Samantha Bennett
Greg Bewley
Bryan and Amy Bitner
Barry Blalock
Brienne Boles
Tallis Bowers
Troy Bowers
Charles and Susan Bowling
Antonio Browder
Margaret Burkhardt
James R Butcher
Bill Cardwell
Deborah Carlson
Robin Carroll
Pedro and Michelle Castillo
Dr. Ray Christine, DDS
Milt and Jean Cole
Shannon Collins
Leslie Connolly
Debbie Cook
Marcine Daris
Sarah Davis
Shirley Dehaven
Janet Dieterly
Joe Dumoulin
Craig and Jill Dunn
Ryan Dunn
Ronald Eller
Jessica Funk
James Galloway

Gary and Jane Bell
Janet Gerber
Susan Giesecke
Barbara Gilliland
Kelly Goad
Asha Goodnight
Glenn Grundmann
Jeff Hanna
Kathy Harbaugh
Jack Harrison
Dawn Harvey
Amy Heaton
Charles and Patricia Hinders
The Hingst Family
Hazel M Hodge
Gregory Holler
Chris Hollins
David Howard
Mark Hurt
Susan Hutchins
Mike and Brenda Imbler
Donald Jaenicke
Robert Jay
Tammy Jones
Gregory and Kari Kerr
Bret Keil
Teresa Kelley
Joan B. Kellum
Joey and Lisa Kimbrough
Dr. Kurt Kingseed
Sommer Kitts
Tacy Kline
Kiley Koke
Chris Kolger
Doug Krinsky

William Lambert
Ken Lucas
Rick Lynch
Rebecca Martin
Nicholas Martino
Joe and Tracy Martino
Julie McKinney
Tom and Karen McKinney
Jeff Mercier
Brayden and Lauren Merrell
Samantha Milburn
Marla Miller
Shannon Miller
Ryan Minick
Richard and Judith Minniear
Michael Morgan
John Morrison
Esther Murrell
Stephen and Joyce Nudge
Marla O'Dell
Miriam O'Malley-Long
Sherry Otto
Alan Parks
Bobby Pettigrew
Emily Pohl
Olivia Pohl
Jackie Ponder
Mark Putterbaugh
Marie Radel
Dorothy Reap
Steve Rector
T.J. and Melissa Rethlake
Tom and Kathy Rethlake
Rhoda Reyburn
Linda Richter

Lane Robinson
Genevieve Rodgers
Judy Rodgers
Kathy Ronk
Marcus St Raymond
Melissa Sabones
Sally Schafer
Heather Schimmelpfer
Tim Sehr
Shane and Alyssa Shaffer
Josh Shannonhouse
Laura Sheets
Nicole Sheridan
Terri Sitzes
Abbie Smith
Craig and Susan Smith
Adria Snoddy
James and Joanne Snoddy
Ryan and Kristen Snoddy
Troy Stiner
Todd and Heather Scoggins
David Townsend
Dianne Trobaugh
Amy True
Heather Tucker
Douglas Vaughn
Joan Walls
Susan Warren
Dirk Webster
Kris Wozny
Nancy Wyant
Paul and Shelly Wyman
Don Zent
Jake and Kylie Young
Brooklyn Zirkle

Accel Consulting
Acension Health Ministry
American Health Network
Bowden Flowers
Burnett's Service Center
Center Township Trustees
Chrysler FCA Plant
Coffee Junkiez
Del-Ra Club
Duke Energy
First Lady's Charitable Foundation
First Merchants Bank
Guardian Angel Foundation
Handy Hardware
The Howard County Community Foundation
Howard Print Shop
Indiana University Kokomo
Kemp United Methodist Church
Kiwanis Club of Kokomo, INC
Knights of Columbus #656
Knorr Corp
Kokomo Herald
Lakeshore Learning Materials
Lucas Home Furnishings
Monroe Construction Group
NIPSCO
PNC Charitable Foundation
Rite Quality Office Supplies, INC.
Solidarity Federal Credit Union
Soupley's Wine and Spirits
St. Vincent Hospital
Top of the Line Auto Detail
Walgreens
Wyman Group

OUR DONORS

Gordon & Marjorie Amendt
 Barbara Angel
 Emily Bargerhuff
 Andrew Barker
 Parker Beam
 Barry Blalock
 Brianne Boles
 Chris Bratcher
 Cindy Britten
 Amanda Burks
 Kaye Chandler
 Molly Chelovich
 Kevin Comerford
 Debra Cook
 Larry Cook
 Mike Cord
 Kathy Cunningham
 Dee Daisy
 Jerry Davis
 Pam Davis
 Barry Donovan
 Lisa Downs
 Craig & Jill Dunn
 Randy Edwards
 Ron Eller
 Jack Fell
 Marsha Flora
 Pam Fortson
 Jay Frazer
 Brent Frix
 William Galles
 Marilyn Galloway

Dennis & Leslie Gardner
 Kris Gilbert
 Marilyn Gronow
 Dr. Carl Grothouse
 Daniel Harrigan
 Iris Heavlin
 Betty Hegenbart
 Gary Helvie
 Dr. Jack Higgins
 Brenda Howard
 Kristen Howe
 Dr. Bruce W. Hughes
 Tim Hutchinson
 Denise Isaac
 D Joan Jackson
 James Jackson
 Donald Jaenicke
 Mark Jansen
 Michelle Kanable
 Michael Karickhoff
 Edna Karmolinski
 Joan B. Kellum
 Dale Kingseed
 Dr. Kurt Kingseed
 Jim Kinley
 Andrew L. Kirby
 David Kirkpatrick
 Tacy Kline
 Larry A. Kuhns
 Marie Lang
 Michael Maher
 John Maher

Sierra Martin
 Andrea Mason
 Erin McAninch
 Sheryl McGovern
 Mark McKinley
 Mark McKinney
 Cathy McKown
 Christina McLay
 Martha L. Mendenhall
 Stephen Nudge
 Elizabeth Ortman
 Raymond Ortman
 Melody Ozment
 Vanessa Parker
 Susan Pattengale
 Wayne Pflugmacher
 Dr. Phillip Pate
 Dorothy Pickett
 Lisa Pierce
 Julie Pownell
 Glen Ray Puterbaugh
 Kyle & Lisa Rayl
 Lyndsay Reidy
 Rhoda Reyburn
 Paul Richard
 John Roberts
 John Robertson
 Blake Rollins
 Kathy Ronk
 Eunice Rush
 Paul Sandy
 Sally Schafer
 Craig E. Severns
 Erica Shelly
 Harold Shipley
 Carolyn Shirley
 David Shultz

Carlee Smith
 Craig Smith
 James Snoddy
 Teri Sommer
 Amanda Stotts
 Joseph Tackett
 Don Tenbrook
 Dr. Ron Thompson
 Jim Thrasher
 Maggie Vang
 Jim Varnau
 Harry A. Veach
 Karen Walck
 Joan K. Walls
 Syed Warsi
 Kellie Weaver
 Christina Weitzel
 Marissa Wilkinson
 Karen Williamson
 Margie Winkleman
 Andrea Wyrick
 Christy Yard
 Dr. Don Zent
 Harvey Zinschlag

AmazonSmile Foundation
 American Eagle
 AMI
 Anonymous UW Donor
 Best Priced Fireworks
 Billy's Auto Repair North
 C.W. Mount Community Center
 Community Foundation of
 Howard County
 Cyril Crampton Trust
 David & Karen Dere Foundation
 Del-Ra Club

Eriks Chevrolet
 Good Shop
 Halee B Photography
 Handy Hardware
 Howard County 4-H Jr. Leanders
 Howard Print Shop
 IACCRR
 Indiana Pest Control
 Indiana Quilts for Kids
 Kappa, Kappa, Kappa, Inc
 Kemp United Methodist Church
 Knights of Columbus #656
 Kroger Community Rewards
 Leader One Financial Corporation
 Main Street United Methodist Men
 Martin Brothers TV &
 Appliances Inc.
 McCords Express Care
 Northwestern Student Council
 Printcraft Press, Inc.
 R. D. Filip Inc.
 SECC
 Second Baptist Church of Kokomo
 Soupley's
 State Employees' Community
 Campaign
 Suns Out, Inc.
 TRUiST
 United Way of Central Indiana, Inc.
 United Way of Greater Dayton Area
 United Way of Howard County
 United Way of Metropolitan
 Chicago
 Water Works Midwest LLC
 We Care
 Zeta Chapter Tri Chi Sorority

Honorarium/Memorial



IN HONOR OF PARKER BEAM
Mr. Parker Beam

IN HONOR OF CHRIS BRATCHER
Mr. Paul Morris

IN HONOR OF EARLY CHILDHOOD PROGRAMS
Halee B Photography

IN HONOR OF DYLAN FRIX
Mr. Brent Frix

IN HONOR OF TRAVIS JAENICKE
Mr. and Mrs. Donald Jaenicke

IN HONOR OF K-4 STAFF
Mr. and Mrs. Barry Donovan

IN HONOR OF SAIGE MAYS
Ms. Rebecca Dempsey

IN HONOR OF CHRISTIE MCKINNEY
Mr. and Mrs. Mark McKinney

IN HONOR OF MORRPAV
Ms. Lisa Pierce

IN HONOR OF ARIANA ROMAN
Ms. Edna Karmolinski

IN HONOR OF SUPPORTED LIVING
Mr. Syed Warsi

IN HONOR OF JACOB WALLS
Ms. Joan Walls

IN HONOR OF WAYLON & PARKER
Mr. Jarrell Steele

IN MEMORY OF DR. JOHN BOWMAN
Mrs. Joan Kellum

IN MEMORY OF CHRIS BRATCHER
Mr. Chris Bratcher

IN MEMORY OF PATRICIA DAVIS
Ms. Pam Davis
Mr. and Mrs. John Roberts
Ms. Amanda Burks

IN MEMORY OF WESLEY GATLIFF
Ms. Christy Yard

IN MEMORY OF DOUG AND NORMA GRECU
Mr. Larry Cook

IN MEMORY OF ELIJAH GUST
Ms. Carlee Smith

IN MEMORY OF BETTE HELVIE
Mr. Gary Helvie

IN MEMORY OF MARY MARTIN
Ms. Kathy Cunningham

IN MEMORY OF MY LOVING GRANDPARENTS
Mr. Syed Warsi

IN MEMORY OF ROBERT MILLER
Mr. and Mrs. Dale Kingseed

IN MEMORY OF JOSEPHINE MISKUNAS
Mr. and Mrs. Norbert Gronow

IN MEMORY OF KARLEE AND JACOB ORTMAN
Ms. Elizabeth Ortman
Mr. Raymond Ortman

IN MEMORY OF SUE LYNN SAINÉ
Mrs. Kaye Chandler

IN MEMORY OF BETTY WALLS
Mr. and Mrs. Gary Walls
Mr. and Mrs. Larry Kuhns
Mr. and Mrs. Harvey Zinschlag
Del-Ra Nut Club

IN MEMORY OF JEAN ZIMMERER THOMAS
Mr. Paul Richard

Michelle's sister, Amanda, is in our services and when asked about Bona Vista's staff, she said, "Thank you for your kindness and care...we appreciate it."

Event Sponsors



Advanced Medical Imaging
Alliance Excavating
American Family Insurance
AndyMark
Art Association of Kokomo
Ashley Furniture HomeStore
Barkers B & K
C.W. Bartholomew, DDS
Beckley Office Equipment
Bennett & Jones Dental Care
Blue & Company
BMO Harris Bank
Dr. Robert Bour
Button Dodge
Cardwell Built Construction
Central Middle School Student Honor Council
Ray Christine, DDS
Community First Bank
Community Howard Regional Health
The DeHayes Group
Dick and Walt's Foreign Car Repair
Eller's Mortuary
Erik's Chevrolet
Esther's Place Boutique
Eye Physicians
Fiat Chrysler Automotive - Indiana
Transmission Plant II
First Congregational Church

First Farmers Bank & Trust
Freedom Financial
Gaffney Insurance
GenerationOn
Genoa
Grace Tabernacle of Praise
William Grider, DDS
Handy Hardware
The Hardie Group
Hayes Advisory Group
Haynes International
Thomas J. Hilligoss, Atty at Law
Hoosier AM/FM Radio
Dr. Steven A. Hott
Humphrey Printing
IN American Water
In Honor of Drew Kingseed
Indiana Heartland Federal Credit Union
Indiana Pest Control
Infinium Spirits
Ivy Tech Community College
JA Benefits
Jansen's Asphalt Sealing & Tax Service
KHS Men's and Women's Basketball Team
Kurt Kingseed, DDS
Kohl's
Kokomo New Car Dealers Assoc.
Kokomo Perspective
Kokomo Police Department
Koorsen Fire & Security
Liberty Financial Group

Lincoln School
Lucas HomeFurnishings
Main Source
Main Street United Methodist Church
Maple Crest Middle School
McGonigals
Medical Reimbursement Consultants
Merrell Brothers
Mid America Beverage
Monroe Construction Group, LLC
Monroe Custom Homes
Northwestern Middle School Student Council
Ortman Drilling
Pediatric Dental Specialists of Indiana, P.C.
PNC Bank
Thomas L. Prather, DDS
Professional Firefighters of Kokomo, Local 396
R.D. Filip & Supply
Regions Insurance
Rhum Academy
Rite Quality Office Supplies, Inc.
Russiaville United Methodist Church
Scared Rabbit
Security Federal Bank
Shiloh United Methodist Church
Shrock Dri Gas
Sidney Frank Importing
Smith Financial
Solidarity Community Federal Credit Union
St. Joan of Arc
St. Vincent Hospital - Kokomo

State Farm - Nick Pate
State Representative Heath VanNatter
Sycamore Financial Group
Timberland Home Center, Inc
Veterans For a Better Community
VFW Post 1152
White's Meat Market
Williams Mowing, Inc.
The Wyman Group
Z92.5 Kokomo's Variety

Event Donors



5 Guys
Accessories by Sandy's
American Eagle Outfitters Foundation
American Legion
Mike Anderson
Anytime Fitness
Ashley Furniture
Shaun Barker
Barkers B & K
Big Splash Adventure Indoor Water
Park & Resort
Blondies Cookies
Blue Chip Casino
Bob Evans
Bona Vista Busy Boxes
C&S Meat Market
Chicago Bears



Chicago Bulls
Chicago Cubs
Children's Museum of Indianapolis
Cincinnati Reds
Circus City Festival
Coca-Cola Bottling Co of Kokomo
Community Howard Regional Health
Cone Palace
Conner Prairie
The Coterie
Cracker Barrel
Crackers Comedy Club
Crew Carwash
CROSSFIT City of Firsts
Culver's
DeCleene Optometry
Jill Dunn
Erik's Chevrolet
Esther's Place Boutique
Eye Physicians, Inc.
Farmers Market Place
Flick Fitness and Massage
Fort Wayne Children's Zoo
Freedom Financial
Garden Gate GreenHouse
Gingerbread House
Grandma's Kiln Pottery
Handy Hardware
Hochstetler Flooring

Howard Regional Health
Indiana Bowling Centers Association
Indiana Pacers
Indiana Repertory Theatre
Indiana University
Indianapolis Colts
Indianapolis Indians Baseball
Indianapolis Motor Speedway
Indianapolis Zoo
J Watson Creations
JA Benefits
Jamie's Soda Fountain
Jefferson House of Flowers
Joe's Jerky
Kentucky Basketball
Kokomo Howard County Public Library
Kokomo Beach
Kokomo Civic Theatre
Kokomo Parks & Recreation
Kokomo Perspective
Kokomo Schwinn
The Kokomo Tribune
Koorsens
Kroger 71
Laugh House
Little Caesars
Lowe's
Lucas Home Furnishings
Lux Boutique

Mac's Express
Malibu Tanning
Manna from Heaven Cakery
Markland and Park
Tracy Martino
MC Sports
McAllister's Deli
McClure Oil Corporation
McDonald's
Merle Norman Cosmetics
Morty's Comedy Joint
Obtuse Magic
Orange Leaf
Palmer's Jewelry
Paradise Bakery Café
Jerry Paul
Pet Supplies Plus
Pizza Hut
Planet Mind
Posh Salon and Day Spa
Purdue Athletics Communications
Ray's Drive In
RD Filip
Reflections Day Spa
Rhum Academy of Music
Rick's Café Boatyard
Rite Quality
Dr. Roegner
Rozzi's Greenhouse
Nolan Sanburn
The Second City

Serrano-Wunderlich Landscaping
Sherwin Williams
Shrock Dri Gas
Craig and Susan Smith
Smith Financial
The Social Experience
Solutions Day Spa
Soupley's
Southern Gypsy
St. Vincent Hospital
Staples
Stricklers Jewelers
Sun City Tan
SunSpot
Sybaris Pool Suites
Syndicate Sales
Target
Texas Roadhouse
United Way
Steve Weatherford
Wendy's Kokomo
Wheel of Fortune
Paul Wyman
YMCA
Z92.5 Kokomo's Variety

Ms. Brenda Howard
Ms. Krista Howe
Mr. Tim & Lester Hutchinson
Mr. and Mrs. James Jackson
Ms. Edna Karmolinski
Ms. Andrea Mason
Mr. Erin McAninch
Mr. Mark McKinley
Mrs. Cathy McKown
Ms. Christina McLay
Ms. Vanessa Parker
Ms. Susan Pattengale
Ms. Lisa Pierce
Ms. Lyndsay Reidy
Mr. Paul Richard
Ms. Eunice Rush
Ms. Erica Shelly
Ms. Carlee Smith
Mr. Teri Sommer
Mr. Jarrell Steele
Ms. Amanda Stotts
Ms. Maggie Vang
Mrs. Karen Walck
Mr. Syed Warsi
Ms. Christina Weitzel
Ms. Marissa Wilkinson
Ms. Christy Yard

Gift In Kind

• • • • •
Mr. Parker Beam
Mr. Chris Bratcher
Ms. Dee Daisy
Ms. Pam Davis
Ms. Rebecca Dempsey
Mr. and Mrs. Mark Downs
Mr. Randy Edwards
Mr. Ron Eller
Ms. Marsha Flora
Ms. Pam Fortson
Mr. Brent Frix
Mr. Gary Helvie
Mr. and Mrs. Mark Hobbs

Billy's Auto Repair
C.W. Mount Community Center
Halee B Photography
Howard Co. 4-H Jr. Leaders
Indiana Pest Control
Indiana Quilts for Kids
Kemp United Methodist Church
Martin Brothers, TV & Appliance
R.D. Filip
Scratching Post Cat Rescue
Snavey's Machine&Manf. Co.
Soupley's Wine and Spirits
Suns Out, Inc.
The DeHayes Group
Zata Chapter Tri Chi Sorority



*Event Sponsors
brought in over
\$50,000!*

Bona Vista Club



Bona Vista Club is an annual voluntary membership in which employees donate a small portion of their paychecks back to Bona Vista Programs.

Angie Armstrong
Becky Ashenfelter
Dawn Bailey
Osheona Barbary
Christy Barker
Carolyn Barney
Kim Bender
Ida Bivens
Alexis Blakley
Brienne Boles
Kailey Bolin
Brandi Bonnell
Troy Bowers
John Bronson

Johnalyn Burns
Tom Cannon
Holly Caudill
Michael Chenoweth
Angela Clemans
Faith Cobb
Danielle Coffman
Shannon Collins
Ryan Conks
Gary Conn
Timothy Cowin
Kelsey Cottom
Kaitlin Davis
Elizabeth Degraffenreid

Shelby Dillon
Marilyn Douglas
Jill Dunn
Heather Duvall
Kenneth Driver
Janet Ellison
Melissa Erb
William Ford
Aubrey Fye
Danielle Galbraith
Kayla Galbraith
Crystal Gibson
Odis Griggs
Jacinda Grigsby

Lisa Harris
Jelicia Hart
Rachel Hedge
Kayla Humphries
Sharon Irwin
Bonnie Julian
Michelle Kanable
Pamela Kemper
Tanner Kidwell
Madison Lewe
Jeffrey Lewis
Megan Lilla
Dennis Lock
Alyssa Lorenz

Dohn Love
Yolanda Love
Patricia Martin
Tracy Martino
Selena Mata
Katie Matthews
Parker McAdams
Jeff McCoy
Kori McDuffie
Penny McHenry
Brigette McMeeken
Jeff Mercier
Amy Moser
Kayla Mullins

Abigail Nelson
Danielle Pebley
Ruth Pluckebaum
Laura Pope
Tammy Price
Maria Reynoso
Lauren Richie
Kathy Ronk
Faith Russell
Bethany Schwing
Vicki Shell
Erica Shelly
Wanetta Sigler
Brittnee Smith
Adria Snoddy
Marcia Snow
Michael Sommer
Susan Straub
Charles Stout
Richard Stroh
Larry Taylor
Karen Walck
Kellie Weaver
Robert Weaver
Charlene White
Amy Willey
Bethany Wilson
Sarah Willoughby
Shaun Wirich
Alexandra Young



Thank you United Way of Howard County and We Care!

The United Way is a beacon of greatness in our community that strives to lend a hand to organizations and help fund programs that are vital in our community. Bona Vista has key programs that the United Way of Howard County funds to provide success in the lives of people that need it most.

Community Connections is one of the programs that receives UW funds. Community Connections provides day programming for adults with severe and profound disabilities. The individuals in Community Connections receive intense supervision through a variety of classes that generate a purposeful day to our persons served. The United Way also partially funds our Developmental Screenings through our Positive Results for Kids pediatric therapy program. From this funding we are able to provide FREE screenings for parents and children in our community.

The local HIT COUNTRY 100.5 KI gives We Care a voice on its radio airwaves. The partnership between WWKI



and We Care is one that represents how radio and fundraising can work together to serve our local communities. Bona Vista received \$85,000 from We Care in 2015. With the successes of the We Care Auction, We Care Trim-a-Tree festival, We Care Park, We Care store and support of local fundraisers, We Care was able to bring in \$411,820.16 in 2015 to distribute to local organizations! Bona Vista is thankful for the annual gift We Care provides to our organization. During our staff recognition event this December, we all sent a special thank you to the people who dedicate so much time to the We Care campaign each year.



ECONOMIC IMPACT



Bona Vista Programs is ranked in the Top 10 largest employers in Howard County!

On average, through our Workforce Diversity program, we place 140 people in jobs in Howard County every year.



Currently employs 512 people and



live in Howard County



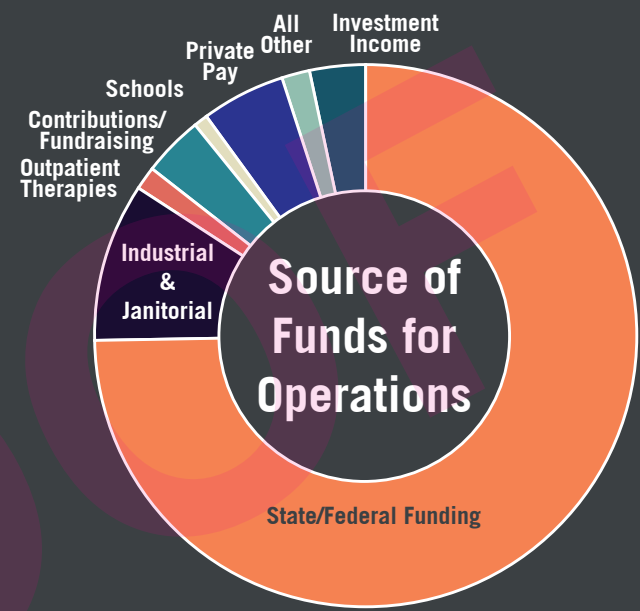
We provide services to over 2,000 children and adults on a daily basis!

Employees at Bona Vista make up 1.34% of the total workforce in Howard County.

FINANCIAL INFORMATION



Children's Services	\$2,759,737
Adult Services	\$4,227,361
Medical Services	\$899,865
Community Living Services	\$7,358,003
Support Services	\$1,994,185



State/Federal Funding	\$12,539,446
Industrial and Janitorial	\$1,576,796
Outpatient Therapies	\$208,271
Contributions/Fundraising	\$618,783
Schools	\$137,343
Private pay	\$845,056
All other	\$289,927
Investment Income	\$511,389
<hr/>	
Unrealized Investment Loss	\$44,751

The financial information below represents the period from July 1, 2014 - June 30, 2015 (Fiscal Year 2015), as audited by Blue & Company LLC.



Enriching Lives...Enhancing Abilities

1220 E. Laguna, P.O. Box 2496
Kokomo, IN 46904-2496

NON-PROFIT
U.S. Postage
PAID
Permit #248
Kokomo, IN

**COME GROW
WITH US!**

Now Hiring

765-457-8273

www.bonavista.org

